

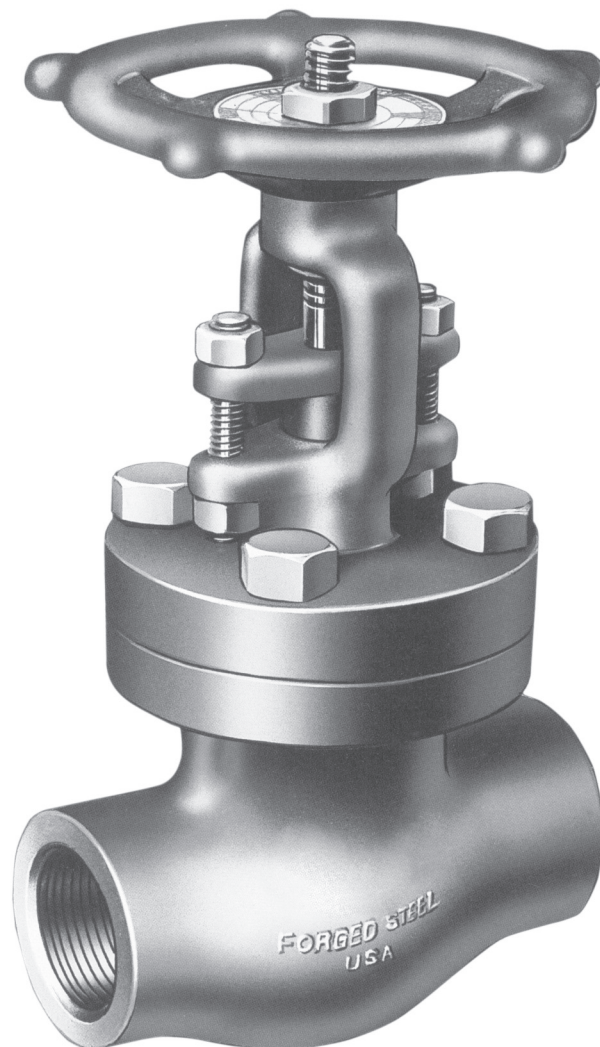


# CONNECTION BULLETIN

## *Vogt Valves*

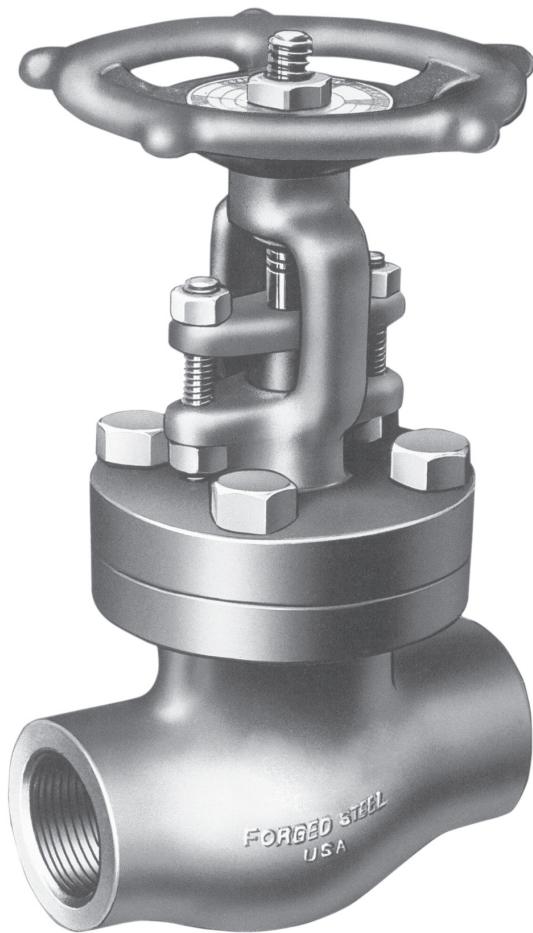
Forged Steel Bellows Globe Valves  
Class 150, 300, 600 and 800

*FCD VVABR1005-00 – 10/04 (Replaces CB-05)*



*Experience In Motion*

# Forged Steel Bellows Globe Valves



## Class 150, 300, 600 and 800

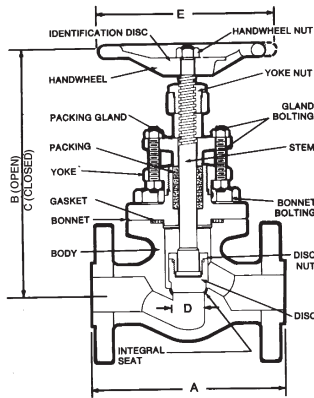
A total containment solution is available with the installation of a Flowserve Vogt Bellows Globe Valve, constructed to positively remove any leak paths at the bonnet joint and packing so common in many valve designs.

The Bellows subassembly, with its flange seal welded to the valve body, totally confines the flow of media within the valve body. The valve packing and bonnet gasket are totally isolated by the bellows from the flowing medium and serve in a back-up sealing role only.

- Zero environmental leakage
- High-strength seamless multi-ply bellows
- Minimum pressure boundary welds
- Flexible graphite packing
- Fully hard-faced seat

All Flowserve Vogt Bellows globe valves are carefully subjected to shell, seat and bellows tests prior to shipment to provide long-term safety and savings through total containment.

## Flanged Ends



- Seamless multi-ply bellows
- Round bolted bonnet
- Spiral wound gasket
- Outside screw and yoke
- Bolted gland
- Hard-faced disc
- Integral hard-faced seat
- ASME B16.34

### Class 150 Conventional Port, 285 psi @ 100°F

Series Number	Material		Size	Weight (lb.)	End-to-End (in.)	Open (in.)	Closed (in.)	Seat Diameter (in.)	Handwheel Diameter (in.)	C <sub>v</sub> Factor
	Flanged Ends 1/16" Raised Face	Body/Bonnet			Trim	A	B	C	D	
473B	A105	316* 316L Bellows <sup>2</sup>	1/2	7.0	4.25	6.32	6.13	.50	4.00	2.2
			3/4	11.6	4.62	6.88	6.62	.75	4.75	5.7
			1	11.7	5.00	6.88	6.62	.75	4.75	5.2
			1 1/2	25.3	6.50	10.00	9.50	1.53	7.00	21.2
			2	38.6	8.00	10.00	9.50	1.53	7.00	20.5

### Class 300 Conventional Port, 740 psi @ 100°F

Series Number	Material		Size	Weight (lb.)	End-to-End (in.)	Open (in.)	Closed (in.)	Seat Diameter (in.)	Handwheel Diameter (in.)	C <sub>v</sub> Factor
	Flanged Ends 1/16" Raised Face	Body/Bonnet			Trim	A	B	C	D	
483B	A105	316* 316L Bellows <sup>2</sup>	1/2	8.7	6.00	6.32	6.13	.50	4.00	2.2
			3/4	15.1	7.00	6.88	6.62	.75	4.75	5.7
			1	15.5	8.00	6.88	6.62	.75	4.75	5.2
			1 1/2	40.2	9.00	10.00	9.50	1.53	7.00	21.2
			2	43.8	10.50	10.00	9.50	1.53	7.00	20.5

### Class 600 Conventional Port, 1480 psi @ 100°F

Series Number	Material		Size	Weight (lb.)	End-to-End (in.)	Open (in.)	Closed (in.)	Seat Diameter (in.)	Handwheel Diameter (in.)	C <sub>v</sub> Factor
	Flanged Ends 1/4" Raised Face	Body/Bonnet			Trim	A	B	C	D	
493B	A105	316* 316L Bellows <sup>2</sup>	1/2	8.8	6.50	6.32	6.13	.50	4.00	2.2
			3/4	14.5	7.50	6.88	6.62	.75	4.75	5.7
			1	16.7	8.50	6.88	6.62	.75	4.75	5.2
			1 1/2	43.8	9.50	10.00	9.50	1.53	7.00	21.2
			2	49.3	11.50	10.00	9.50	1.53	7.00	20.5

\* Seat and Disc are hard faced. Stem is 13% Cr.

<sup>2</sup> Also available with Inconel 625 trim package.

Valve flanges conform to ASME Standard B16.5 and end-to-end dimensions conform to ASME Standard B16.10.

# Threaded or Socket Weld Ends

Class 800 Conventional Port, 1975 psi @ 100°F

Series Number		Material	
Threaded	Socket Weld	Body/Bonnet	Trim
12141B	SW12141B	A105 <sup>1</sup>	316* 316L Bellows <sup>2</sup>

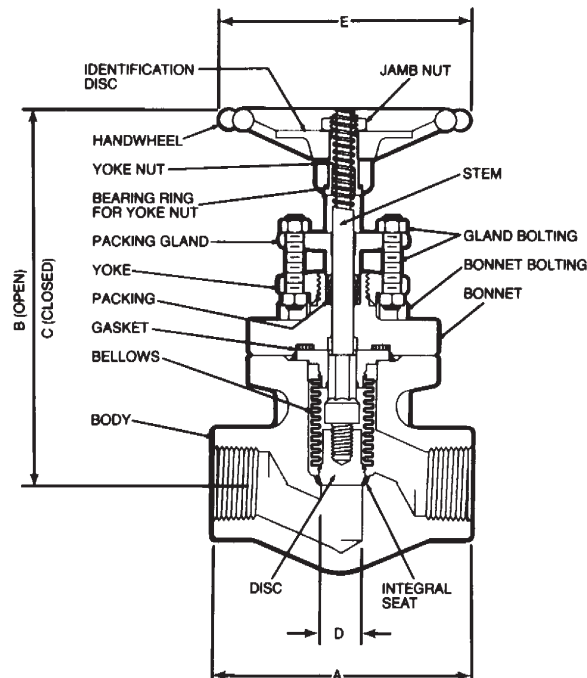
\*Seat and Disc are hard faced. Stem is 13% Cr.

<sup>1</sup> Also available in ASTM A182, Grade F316/F316L body and bonnet construction.

<sup>2</sup> Also available with Inconel 625 trim package.

Size	Weight (lb.)	End-to-End (in.)	Open (in.)	Closed (in.)	Seat Diameter (in.)	Handwheel Diameter (in.)	C <sub>v</sub> Factor
		A	B	C	D	E	
½	5.0	3.75	6.32	6.13	.50	4.00	2.2
¾	8.7	4.62	6.88	6.62	.75	4.75	5.7
1	8.5	4.62	6.88	6.62	.75	4.75	5.2
1½	30.5	7.75	10.00	9.50	1.53	7.00	21.2
2	30.5	7.75	10.00	9.50	1.53	7.00	20.5

- Seamless multi-ply bellows
- Round bolted bonnet
- Spiral-wound gasket
- Outside screw and yoke
- Bolted gland
- Hard-faced disc
- Integral hard-faced seat
- ASME B16.34





**United States**  
Flowserve Corp.  
Flow Control  
Flowserve Vogt Valves  
1511 Jefferson Street  
Sulphur Springs, TX 75482 USA  
Telephone: 903-885-3151  
Fax: 903-439-3386

FCD VVABR1005-00 Printed in USA. (Replaces CB-05)

***To find your local Flowserve representative:***

For more information about Flowserve Corporation, visit  
[www.flowserve.com](http://www.flowserve.com) or call USA 1 800 225 6989

Flowserve Corporation has established industry leadership in the design and manufacture of its products. When properly selected, this Flowserve product is designed to perform its intended function safely during its useful life. However, the purchaser or user of Flowserve products should be aware that Flowserve products might be used in numerous applications under a wide variety of industrial service conditions. Although Flowserve can (and often does) provide general guidelines, it cannot provide specific data and warnings for all possible applications. The purchaser/user must therefore assume the ultimate responsibility for the proper sizing and selection, installation, operation, and maintenance of Flowserve products. The purchaser/user should read and understand the Installation Operation Maintenance (IOM) instructions included with the product, and train its employees and contractors in the safe use of Flowserve products in connection with the specific application.

While the information and specifications contained in this literature are believed to be accurate, they are supplied for informative purposes only and should not be considered certified or as a guarantee of satisfactory results by reliance thereon. Nothing contained herein is to be construed as a warranty or guarantee, express or implied, regarding any matter with respect to this product. Because Flowserve is continually improving and upgrading its product design, the specifications, dimensions and information contained herein are subject to change without notice. Should any question arise concerning these provisions, the purchaser/user should contact Flowserve Corporation at any one of its worldwide operations or offices.

© 2004 Flowserve Corporation, Irving, Texas, USA. Flowserve is a registered trademark of Flowserve Corporation.