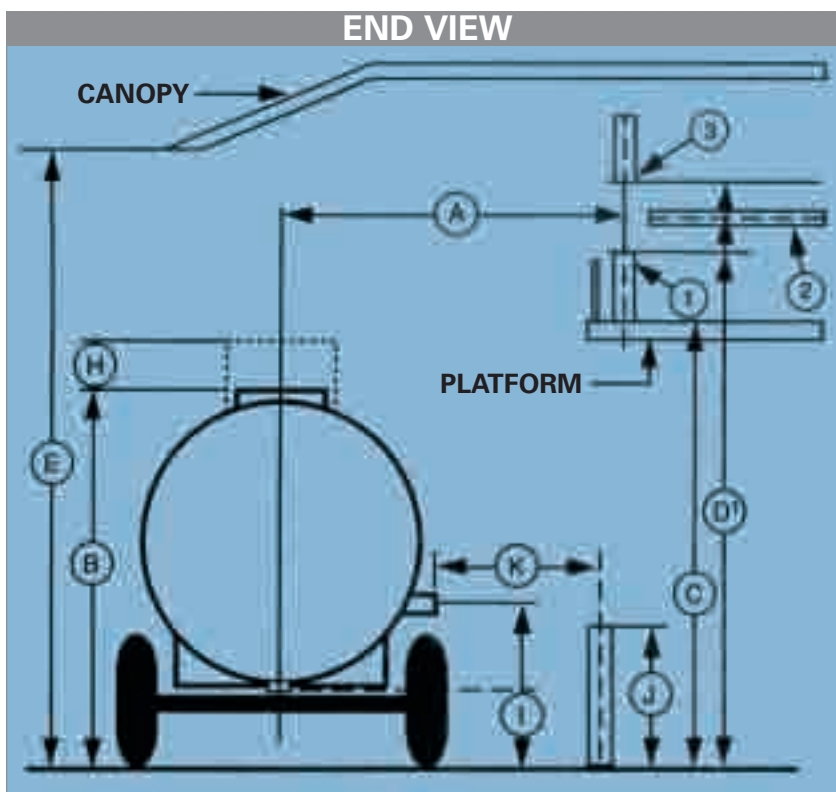


LIQUID LOADER DESIGN INFORMATION

Project: _____ Date: _____
 Location (city, state, zip): _____
 Distributor: _____
 Phone: _____
 Contact: _____



Type of Requirement

Rack Identification _____

Quantity _____

Top Loading Bottom Loading Vapor Recovery

Tank Trucks Rail Cars

Will the product be: Splash-loaded Sub-surface or Tight-fill

If Tight-fill, specify connection _____

Materials to be Transferred

Product to be handled _____ Viscosity _____ SSU

Temperature _____ °F, Concentration (if applicable) _____

Special Characteristics _____

Sizes & Capacities

Inlet connection type? _____

Inlet Pipe Size 2" 3" 4" 6" Vapor Pipe Size 1" 2" 3" 4"

Max. PSIG _____ Working PSIG _____

Discharge Rate _____ GPM

Desired Materials of Construction:

1) Metals: Carbon Steel Aluminum 316 Stainless Steel
 Other

2) Desired Seals: BUNA VITON® TEFLON® Neoprene
 EPT Other

Features

Loading Arms to be: Right Hand Left Hand

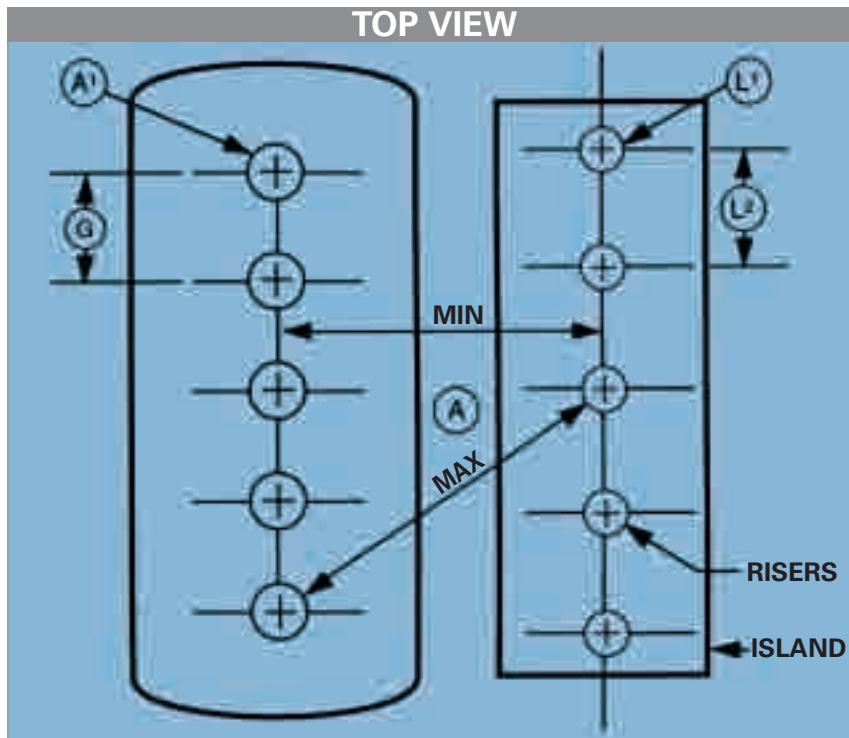
Is Shut-off Valve Required? Yes No

Will Arm Retain Product? Yes No

Location of valve on arm _____

Desired Type of Valve _____

Will Valve be Used to Shut Down Line? Yes No



Will Additional Equipment be Added by Others?

(Specify Weight & Location)

- Electrical Tracing _____ lbs/ft
- Insulation _____ lbs/ft
- Hose _____
- Valve/Fitting _____
- Other _____

Other Desired Features: _____

Dimensional Data: Top Loading/Unloading

- A CL of Riser to CL of Tank Opening:
Max. _____ Min. _____
- A¹ Number of Openings _____
- B Ground Level of Top of Tank _____
- C Ground Level to Top of Platform _____
- D Ground Level to Riser _____

Riser Configuration: 1 2 3

- E Ground Level to Overhead Obstruction _____
- H Top of Tank to Top of Safety Rail _____
- L₁ Number of Risers _____
- L₂ Distance Between Risers _____
- Distance Between Openings _____

Bottom Loading/Unloading

- I Ground Level to CL Tank Connection _____
- J Ground Level to Top of Riser _____
- K CL of Riser to Tank Fitting: _____
Max. _____ Min. _____
- L₁ Number of Risers _____
- L₂ Distance Between Risers _____

What Current Metals and Sealing Materials are being used in this application (Pump, Valves and Meters)?

Metals _____

Seals _____