



Remote Communication Capabilities

Sonix Gas Meter

Sensus Metering Systems introduces the remote data collection and storage solution for the industrial/commercial SONIX Gas Meter utilizing the pulse output option. The two-wire pulse output enables the SONIX meter to send data to an ITRON ERT module, a METRETEK industrial/commercial pulse accumulation module, or any Form A pulse accumulation hardware. The combination of SONIX meters and a remote data collection devices provide a sound solution for today's growing need for measurement accuracy and lowest total-cost-of-ownership.

Pulse Output for Sonix 600 and 880 Meters

Specifications:

Sonix meters have an optional Form A pulse output. The pulse output is an optically coupled open collector transistor with zener diode protection.

- Pulse Width: 50mS
- Duty Cycle: 50%
- Max. Pulse Rate: 8Hz
- Max. Voltage: 24v
- Max. Output Current @24v: 8mA
- Max. Output Current @12v: 15mA

Adjusting the Volume per Pulse:

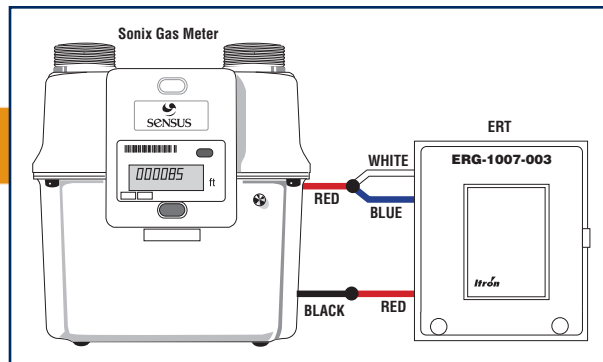
The SonixCom software provides the ability to set the pulse output sent to the ERT as one of the following totalized volumetric units:

- Imperial Units:
 - 1 pulse per 10 cf
 - 1 pulse per 100 cf
 - 1 pulse per 1000 cf

ITRON Inc. (Phone: 1-800-635-5461, www.itron.com)

40G ROTARY ERT® Module:

The Encoder Receiver Transmitter Module serves as the RF-based data collection device for the Sonix Gas Meters.

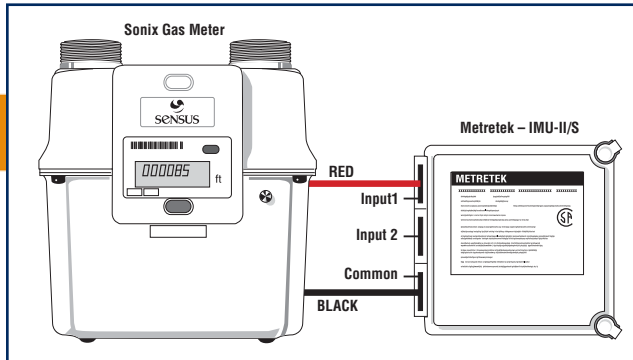




METRETEK Inc. (Phone: 1-800-327-8559, www.metrotekfl.com)

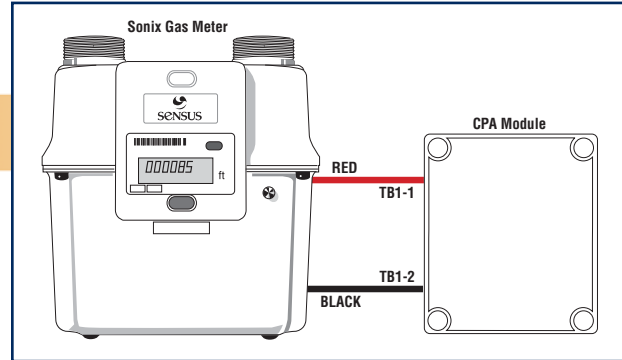
Industrial Metering Unit – II/Serial (IMU-II/S)

The IMU-II/S is designed to collect pulse data from up to two inputs and store data as a function of time. The data can be retrieved through a dial-up modem connection or other RS-232 interface protocols.



Commercial Pulse Accumulator (CPA)

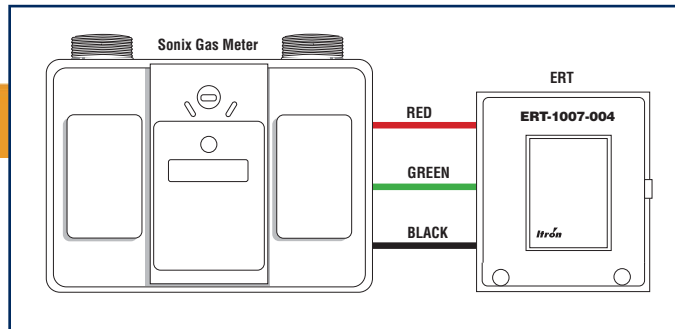
The CPA is designed to store and transmit pulse data through standard voice-grade telephone lines. Data can be either meter reads with peak hour determination or hourly time tagged intervals.



Volume Output Serial Interface for Sonix 215

40G ERT Module

In addition to the pulse output options for the industrial/commercial Sonix Gas Meters, the residential Sonix 215 meter provides a serial interface connection that enables the meter to send the totalized flow displayed on the meter index, to an ITRON ERT module.



805 Liberty Boulevard
DuBois, PA 15801
800-375-8875
Fax: (814) 375-8460
www.sensus.com
(open "North America Gas")