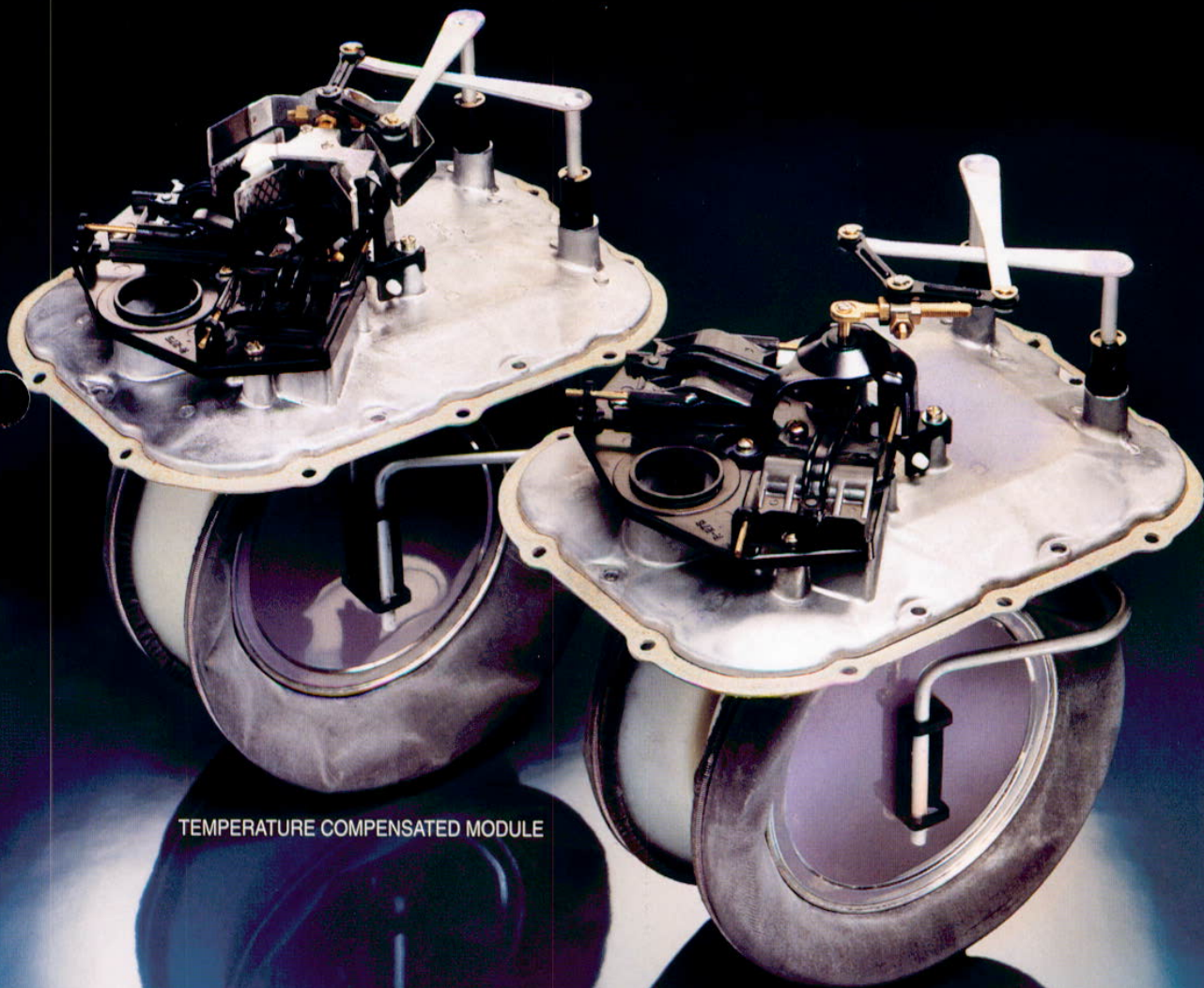



# Equimeter Residential Diaphragm Meter Modules



TEMPERATURE COMPENSATED MODULE

NON-TEMPERATURE COMPENSATED MODULE

**Equimeter**  
INCORPORATED

 A member of the BTR Group

Taking the Measure of Tomorrow

## Equimeter Diaphragm Meter Replacement Modules for Taking the Measure of Tomorrow

Equimeter replacement modules make it quick, easy and cost-efficient to repair residential gas meters. Buying a replacement module is like buying a new meter because a replacement module equals new meter life.

Equimeter assembles replacement modules with the same standards as all of our meters – outstanding, dependable and accurate.

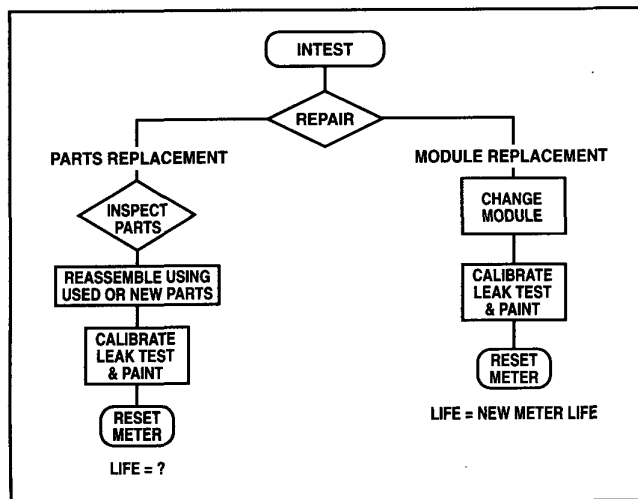
### Replacement

Replacement is simple. Just remove the screws holding the valve plate; then lift the old measuring module out and set a new Equimeter module in place. Now the meter is ready to be calibrated, leak-tested, painted and set. The process is that simple and quick.

If you decide not to use a replacement module, the repair can become difficult, costly and timely. The repairman must:

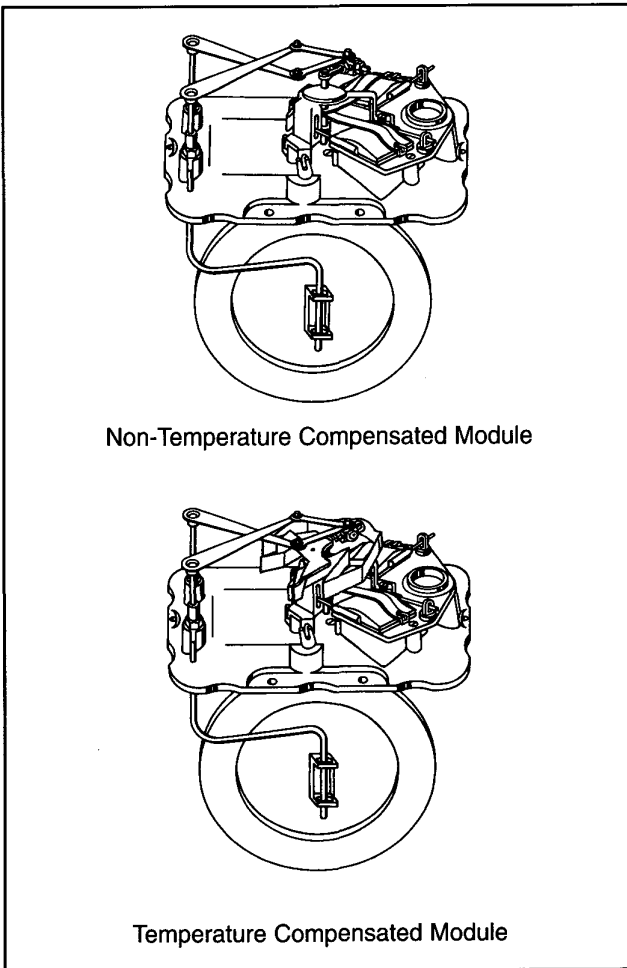
- take off the meter cover
- remove worn parts
- remove the crank bracket assembly, links, valves and check the stuffing box for binds
- clean the parts
- re-assemble the meter with used, cleaned or new parts
- The meter is then re-tested, leak-tested and repainted

After these steps a utility has a substantial investment in the meter. But no matter how good the repair job, only a few parts have been replaced or repaired. You now have a repaired meter, but that may not mean new meter life.



## Converting Standard Meters to Temperature-Compensating Meters

Changing a standard meter to a temperature-compensating (T.C.) meter is as easy as replacing a used, worn-out module. Simply change-out the standard module and insert a new T.C. meter module. With ease of replacement like this, it makes good business sense to call Equimeter now.



### Call for More Information

Look to Equimeter as the source for your replacement meter modules. Our services and equipment offer measurement accuracy and lasting performance. Call the nearest Equimeter sales office for prompt and personal assistance.

## Part Numbers

METER	STANDARD	TEMPERATURE COMPENSATING
S-200/R-200	00163-502-54000	00163-502-55000
MR-6/MR-4*	00163-502-22000	00163-502-23000
R-275/S-275/R-315	00163-502-06000	00163-502-07000
MR-8/MR-9/MR-5*	00163-502-19000	00163-502-20000
#415	00141-502-70000	00141-502-71000
MR-12*	00141-502-72000	00141-502-73000

\*Denotes Metric

## How To Order

To order a module, simply select the module part number from the table above. If you want any options (several of the more popular ones are shown), just specify the option number on the purchase order.

If you want an option package not shown as a standard option package, contact your salesman or regional sales office. We will get back to you with a quote on your special requirements.

## Options

### OPTION 1:

New Index  
New Badge

### OPTION 3:

New Handhole Plate Gasket  
New Handhole Plate Rockseal Kit  
New Handhole Plate Screws (3)  
Plus all Features from Option 2

### OPTION 2:

New Rockseal Index Box  
New Index Box Gasket  
New Index Mounting Screws (2)  
New Index Box Screws (4)  
Rockseal Plugs (2)  
Plus all Features from Option 1

### OPTION 4:

New Cover-to-Body Screws  
R-200/RC-230/R-275/R-315 (10)  
#415 (12)  
Customer Badge  
Stuffing Box Assembly  
Plus all Features from Option 3

**NOTE:** All options are shipped in the same carton as module, unless otherwise specified.

---

**Equimeter Incorporated, 805 Liberty Boulevard, DuBois, PA 15801**  
**(814) 371-8000**  
**FAX (814) 375-8460**

Representatives in all principal cities.  
Distributors throughout the world.



Equimeter Incorporated  
805 Liberty Boulevard  
P.O. Box 528  
DuBois, PA 15801

 A member of the BTR Group



---

**Authorized Distributor:**

**LIMITED WARRANTY** Seller warrants the Goods to be free from defects in materials manufactured by Seller and in Seller's workmanship for a period of [one (1) year] after tender of delivery (the "Warranty Period"). **THIS LIMITED WARRANTY (a) IS IN LIEU OF, AND SELLER DISCLAIMS AND EXCLUDES, ALL OTHER WARRANTIES, STATUTORY, EXPRESS OR IMPLIED, INCLUDING, WITHOUT LIMITATION, ANY WARRANTY OF MERCHANTABILITY OR FITNESS FOR A PARTICULAR PURPOSE, OR OF CONFORMITY TO MODELS OR SAMPLES;** (b) does not apply to any Goods which have been (i) repaired, altered or improperly installed; (ii) subjected to improper use or storage; (iii) used or incorporated with other materials or equipment, after Buyer or anyone using the Goods has, or reasonably should have, knowledge of any defect or nonconformance of the Goods; or (iv) manufactured, fabricated or assembled by anyone other than Seller; (c) shall not be effective unless Buyer notifies Seller in writing of any purported defect or nonconformance within [thirty (30) days] after Buyer discovers or should have reasonably discovered such purported defect or nonconformance; and (d) shall only extend to Buyer and not to any subsequent buyers or users of the Goods. Buyer shall provide Seller access to the Goods as to which Buyer claims a purported defect or nonconformance; upon request by Seller, Buyer shall, at its own risk and expense, promptly return the Goods in question to Seller's Plant.